



The Ridgeway, Lightwater

£1,150,000



The Ridgeway, Lightwater, Surrey

Beautiful period country home located in a mature wooded setting in Lightwater. The individual property is full of character features including beamed ceilings, lovely working feature fireplace, exposed brickwork and is offered for sale with no onward chain.

FEATURES

- No onward chain
- Attractive period home
- Red brick fireplaces
- Beamed ceilings and walls
- Private setting
- Easy access to junction 3 of the M3
- Walking distance of Lightwater Country Park
- 2061 sq.ft excluding garage

ACCOMMODATION

- Entrance Hall
- Downstairs cloakroom
- Kitchen
- Four reception rooms
- Four/five bedrooms
- Two bathrooms

OUTSIDE

- Driveway parking to front
- Garage
- Attractive, mature, private gardens with patio

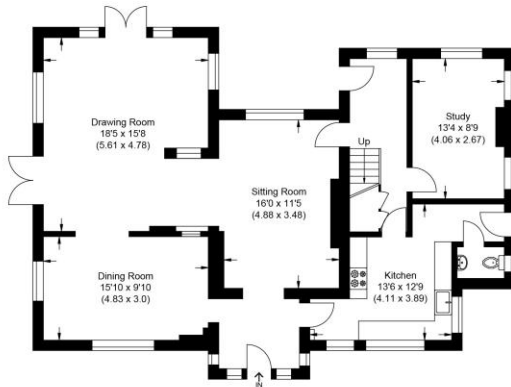
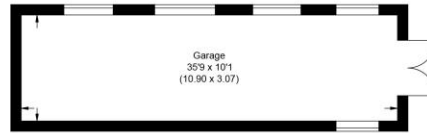
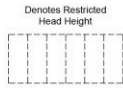
EPC RATING

F

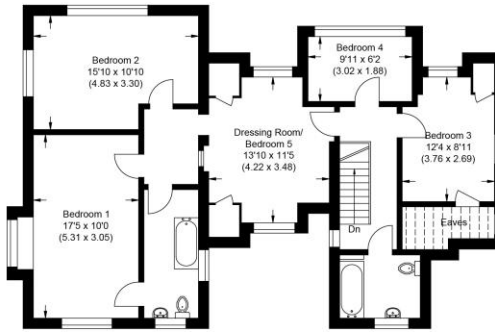




Approximate Gross Internal Area
 191.54 sq m / 2061.71 sq ft
 (Excludes Garage)
 Garage Area 33.46 sq m / 360.16 sq ft



Ground Floor



First Floor

Illustration for identification purposes only, measurements are approximate, not to scale.

Disclaimer: We wish to inform prospective purchasers that we have prepared these sales particulars as a general guide. We have not carried out a detailed survey, nor tested the services, appliances and specific fittings. Room sizes are approximate and rounded: they are taken between internal wall surfaces and therefore include cupboards / shelves, etc. Accordingly, they should not be relied upon for carpeting, curtains / blinds and kitchen equipment, whether fitted or not, are deemed removable by the vendor unless specifically itemized within these.

Postcode for sat nav: GU18 5XS



The Old Dairy, 7 Updown Hill, Windlesham, Surrey GU20 6AF
 enquiries@newtonrowe.co.uk | 01276 986900